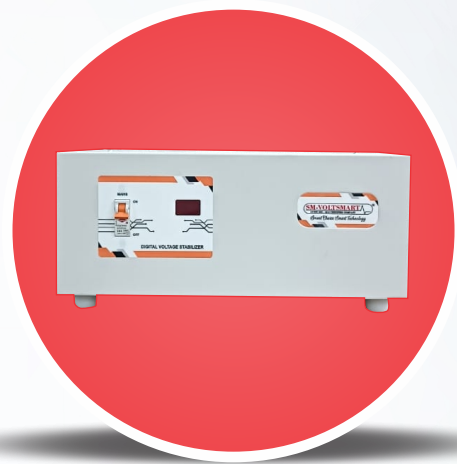


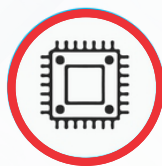


VOLTAGE STABILIZER

SPECIALLY DESIGNED FOR OUR AIR CONDITIONERS



NON-STOP COOLING WITH UNINTERRUPTED SLEEP



Microcontroller Inside



Power Saving



Low & High Voltage cut



Built to last



UNIVERSAL COMPATIBILITY WITH ALL TYPES OF AC'S: INVERTER/NON-INVERTER/SPLIT/WINDOW

SM-VOLTSMART AC VOLTAGE STABILIZERS TECHNICAL SPECIFICATIONS

Technical Specifications	Voltage Stabilizer For AC 4 KVA 3200W 90V/300V SMV490	Voltage Stabilizer For AC 4 KVA 3200W 130V/280V SMV4130	Voltage Stabilizer For AC 4 KVA 3200W 150V/280V SMV4150	Voltage Stabilizer For AC 5 KVA 4000W 130V 280V SMV5130	Voltage Stabilizer For AC 5 KVA 4000W 150V/280V SMV5150	Voltage Stabilizer For AC 5 KVA 4000W 90V/300V SMV590	Voltage Stabilizer For AC 5 KVA 4000W 160V/280V SMV5160	Voltage Stabilizer For AC 4 KVA 3200W 170V/270V SMV4170	Voltage Stabilizer for AC 4 KVA 3200W 110V-290V SMV4110
Capacity	4KVA	4KVA	4KVA	5KVA	5KVA	5KVA	5KVA	4KVA	4KVA
Working Range	90V-300V	130V-280V	150V-280V	130V-280V	150V-280V	90V-300V	160V-280V	170V-270V	110V-290V
Output Working Range	200V - 240V ± 5%	200V - 240V ± 5%	200V - 240V ± 5%	200V - 240V ± 5%	200V - 240V ± 5%	200V - 240V ± 5%	200V-240V +/- 5%	200V - 240V ± 5%	200V - 240V ± 5%
Application	0.8 / 1.0 / 1.2 / 1.5 Ton AC	0.8 / 1.0 / 1.2 / 1.5 Ton AC	0.8 / 1.0 / 1.2 / 1.5 Ton AC	0.8 / 1.0 / 1.2 / 1.5 / 2 Ton AC	0.8 / 1.0 / 1.2 / 1.5 / 2 Ton AC	0.8 / 1.0 / 1.2 / 1.5 / 2 Ton AC	0.8 / 1.0 / 1.2 / 1.5 / 2 Ton AC	0.8 ton / 1 ton / 1.5 ton.	0.8 ton / 1 ton / 1.5 ton.
Power Source type	Electric	Electric	Electric	Electric	Electric	Electric	Electric	Electric	Electric
Cabinet Material	Metal	Metal	Metal	Metal	Metal	Metal	Metal	Metal	Metal
Product Dimensions	48 x 25 x 38 cms.	39 x 18 x 28 cms.	27 x 13 x 21 cms.	39 x 18 x 28 cms.	39 x 18 x 27 cms.	35 x 12 x 25.8 cms.	30.7 x 13.9 x 18.8 cms.	28 x 13 x 21 cms.	37 x 19 x 32 cms.
Max. Output Current	12 Amps.	12 Amps.	12 Amps.	16 Amps.	16 Amps.	16 Amps.	16 Amps.	12 Amps.	12 Amps.
Initial Time Delay	5 to 10 seconds	5 to 10 seconds	5 to 10 seconds	5 to 10 seconds	5 to 10 seconds	5 to 10 seconds	5 to 10 seconds	5 to 10 seconds	5 to 10 seconds
Frequency	50 Hz. +/- 2 Hz.	50 Hz. +/- 2 Hz.	50 Hz. +/- 2 Hz.	50 Hz. +/- 2 Hz.	50 Hz. +/- 2 Hz.	50 Hz. +/- 2 Hz.	50 Hz. +/- 2 Hz.	50 Hz. +/- 2 Hz.	50 Hz. +/- 2 Hz.
Technology	Relay Type	Relay Type	Relay Type	Relay Type	Relay Type	Relay Type	Relay Type	Relay Type	Relay Type
Cooling-type	air cooled	air cooled	air cooled	air cooled	air cooled	air cooled	air cooled	air cooled	air cooled
Idle Power Consumption	Less than 10 watts*	Less than 10 watts*	Less than 10 watts*	Less than 10 watts*	Less than 10 watts*	Less than 10 watts*	Less than 10 watts*	Less than 10 watts*	Less than 10 watts*
AC Support	Normal / Inverter	Normal / Inverter	Normal / Inverter	Normal / Inverter	Normal / Inverter	Normal / Inverter	Normal / Inverter	Normal / Inverter	Normal / Inverter
Voltage Correction	Wide Range	Medium Range	Narrow Range	Medium Range	Narrow Range	Wide Range	Medium Range	Medium Range	Wide Range
City Recommendation	Tier III	Tier II	Tier I	Tier II	Tier I	Tier III	Tier II	Tier II	Tier III
Wall Mountable	✓	✓	✓	✓	✓	✓	✓	✓	✓



Protection For AC



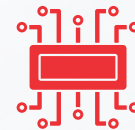
Operation
(Fully Automatic)



Digital Display



Power Saving



Micro-controller



Perfect Stabilizer

